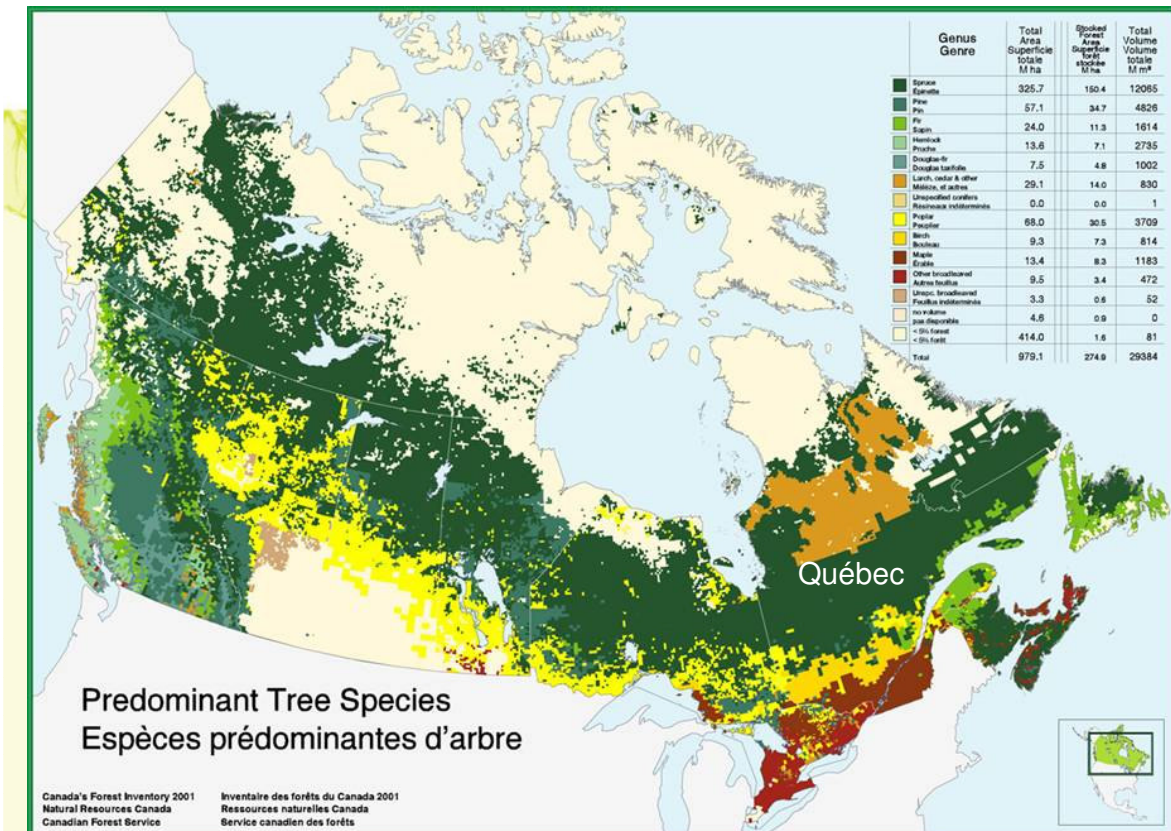


SUSTAINABLE FOREST MANAGEMENT: SOME FACTS FROM QUEBEC



Ressources naturelles
et Faune
Québec



Quebec Forest



Quebec Forest (km²)

Total continental area	1 498 000
Forest land surveyed	498,000
Forest land likely subject to forest management activities	424,000
Productive public land	355,000
Productive private land	66,000
Productive federal land	2,800
Harvested forest/yr (public and private)	4,000

Basic facts about Québec forests



- Represent 20% of Canadian forests and 2% of the world's forests
- Roughly 400,000 ha/yr is harvested (~1% of productive forests)
- By law, it must be promptly regenerated
- Annual allowable cut (2005-06) 47.8 M m³
- 80 000 direct and 100 000 indirect jobs
- 250 over 794 industrial municipalities are dependant of forest products

Actions related to International Commitments

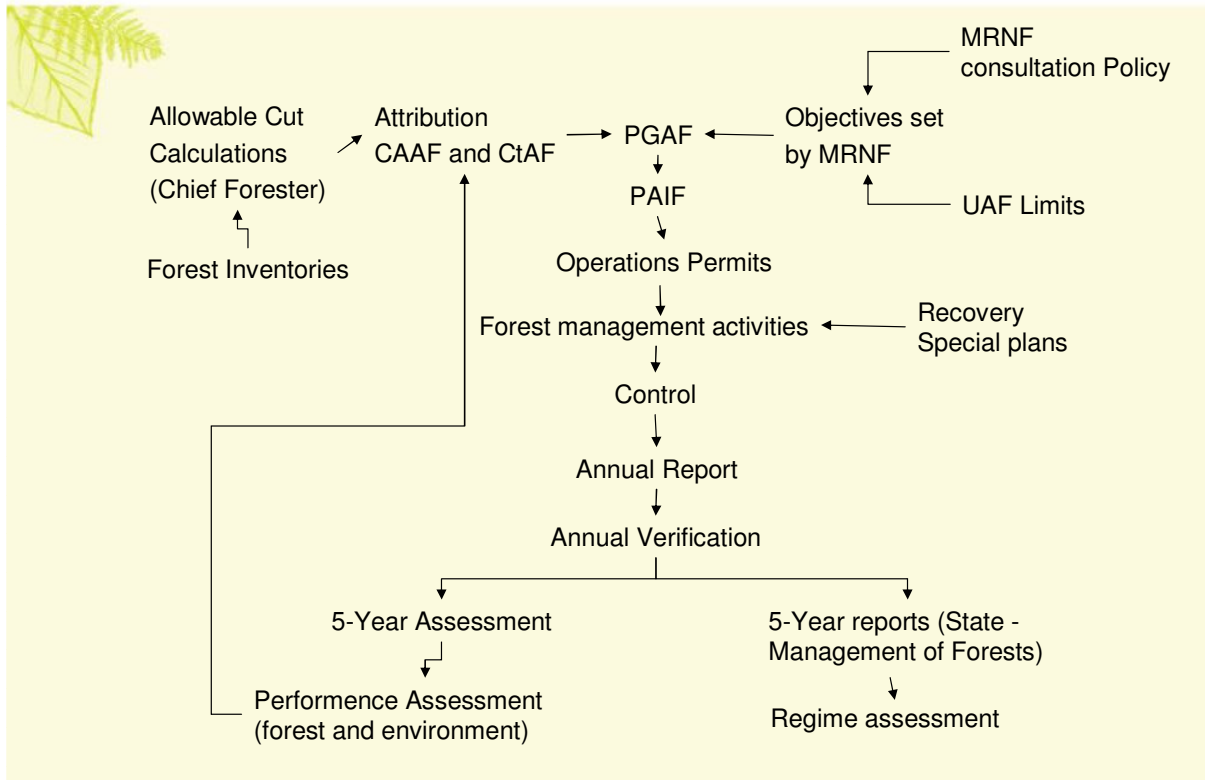
- SFM criteria in Forest Act (1996)
- Water Policy (2002)
- Strategy plan on biodiversity (2004-2007)
- Sustainable Development Strategy
- Climate Change Action Strategy (2006-2012)



Global Legal Framework

- Forest Act
- Natural Heritage Conservation Act
- Act respecting the Conservation and Development of Wildlife
- Parks Act
- Environment Quality Act
- Act respecting the Lands in the Domain of the State
- Act respecting Land Use Planning and Development
- Act respecting the Preservation of Agricultural Land and Agricultural Activities

Forest Management (in short)



Constant Evolution Towards SFM in Quebec

- 1986-88 : Forest Act and regulations
- 1994 : Forest Protection Strategy
- 1995 : Private Forest Summit
- 1996 : Introduction of six SFM criteria in Forest Act
- 2000 : Forest Act updated
- 2002 : Protected Area Strategy
- 2002 : consultation Policy
- 2004 : Sustainable Development Strategy
- 2004 : Coulombe Commission's report
- 2005: Creation of Forester in Chief position
- 2006 : First Nations Consultation Guidelines 2007-2008
- 2007 : Forest Sector Summit
- 2008 : Green Paper : More changes to come

Forest Policy Values and Requirements

- Sustainable forest practices
- Conservation (protected areas network)
- Sustained yield
- Regeneration after harvest (focus on natural)
- Protection of water courses
- Protection of biodiversity
- Protection of landscapes
- No chemical pesticides or herbicides
- No GMO on public land
- Participatory management

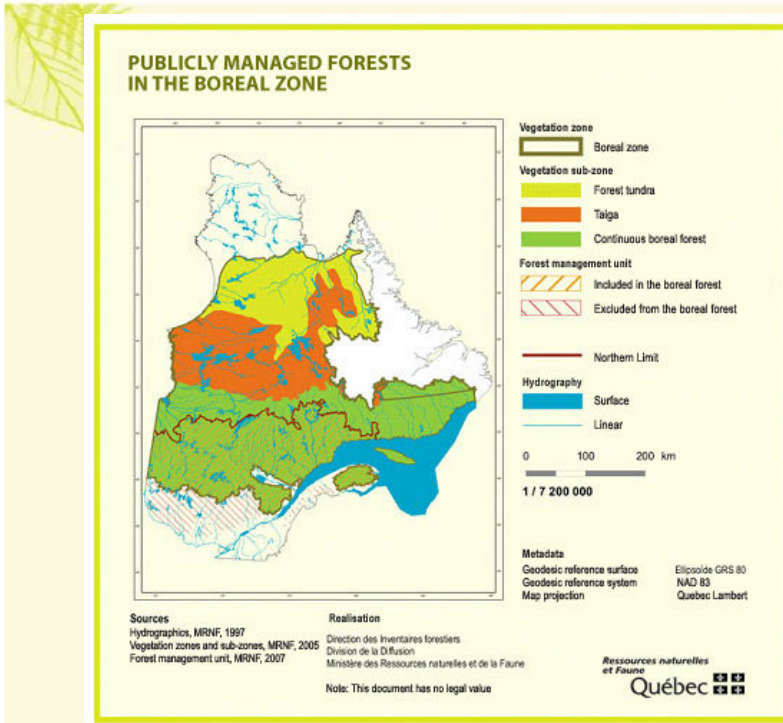


New management practices

- Small merchantable stem protection harvesting (CPPTM)
- High regeneration and soil protection harvesting (CPHRS)
- Clump harvesting
- Variable retention harvesting



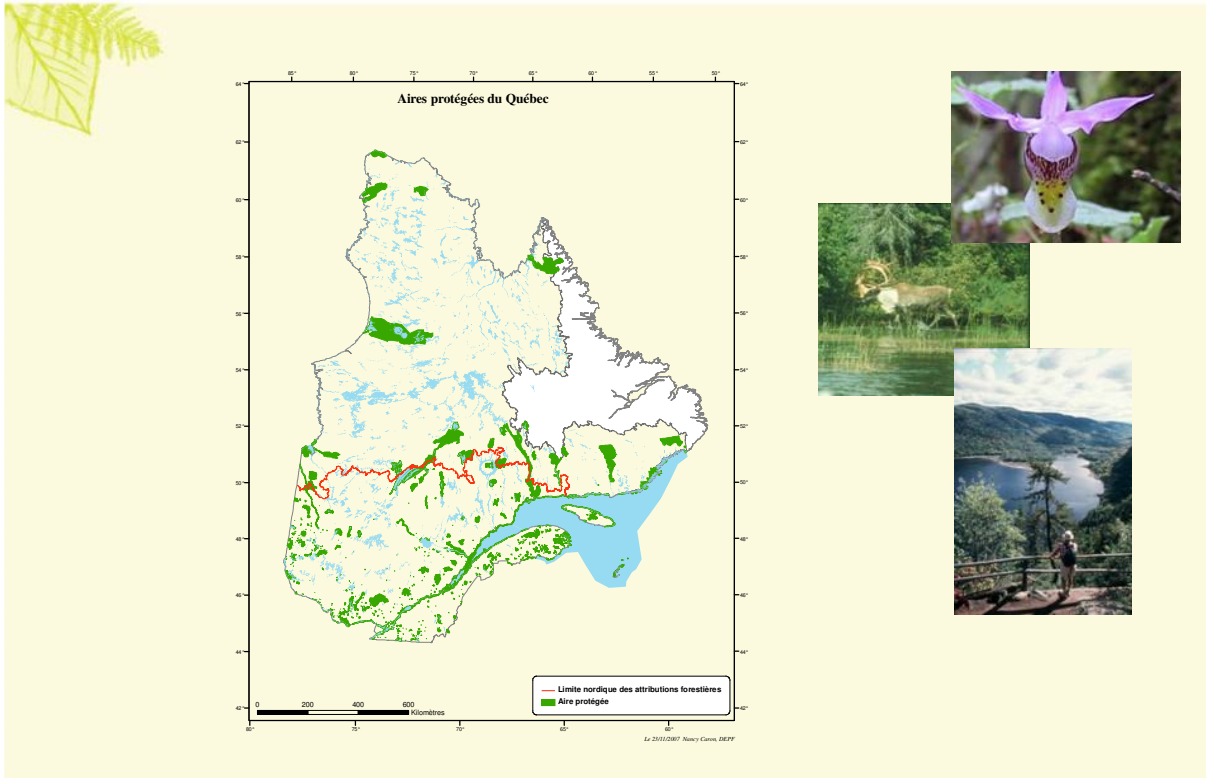
Highlight on the Boreal Forest



Public participation



Protected Areas Network



Forest Certification

More than 40% Quebec productive forest territories certified (including public and private land)

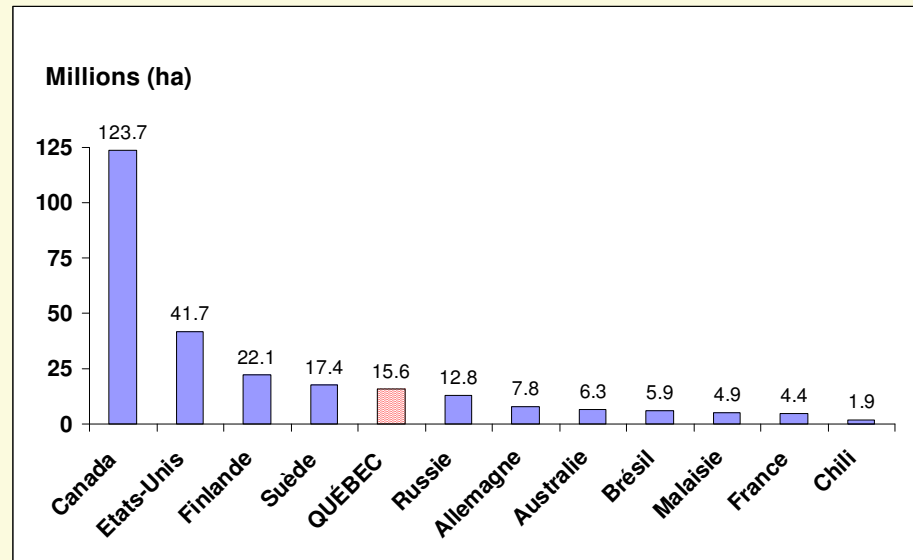
Current government policy

- Possible mandatory certification in the future and ecoconditionnalité
- Facilitates and supports companies procedures
- Does not favor a particular system
- Participates in the development of certification standards

	December 2004	June 2007
CSA	4,5	9,9 M ha
FSC	0,002	4,4 M ha
SFI	2,1	2,6 M ha
Total	6,6	16,9 M ha

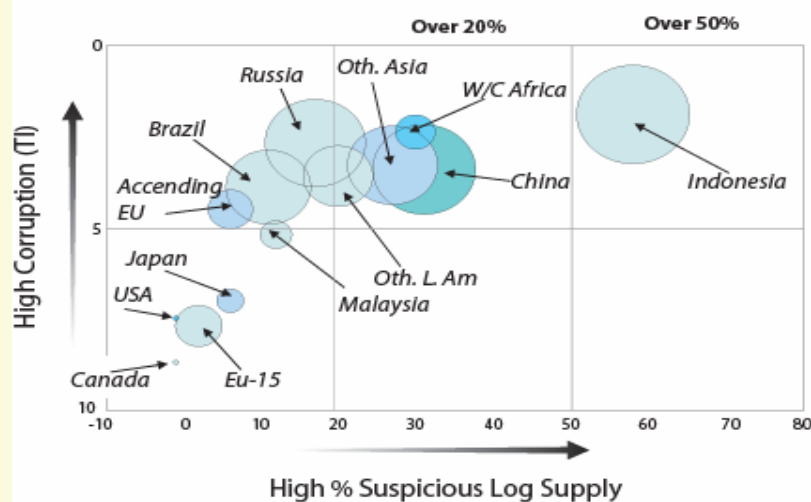


Le Québec forestier parmi les plus certifiés au monde



Décembre 2006

Corruption and Illegal Forest Activity



Note: Size of bubbles represents volume of suspect roundwood, including imports. Sources: Transparency International; WRI/SCA estimates of illegal logging, in American Forests & Paper Association 2004



Thank you !



More information :
www.mrnf.gouv.qc.ca